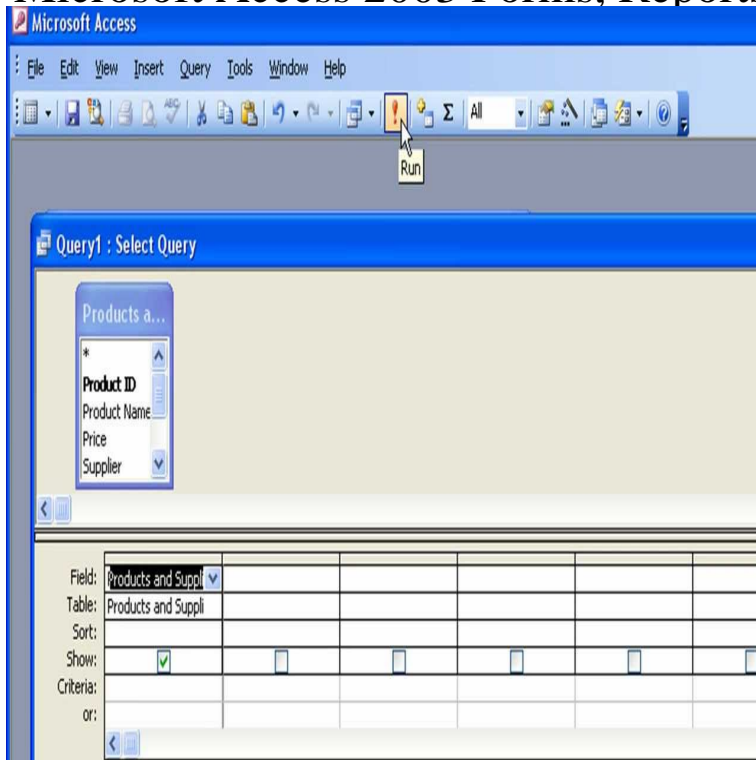


Microsoft Access 2003 Forms, Reports, and Queries



When it comes to job-productivity, we all want to be able to perform well, especially when it comes to challenging assignments. Anyone who works with Microsoft. Microsoft Access Forms, Reports, and Queries has 12 ratings and 0 reviews . When it comes to job-productivity, we all want to be able to. Book + eBook Bundle. Your Price: \$; List Price: \$; We're temporarily out of stock, but order now and we'll send it to you later. Tables and queries are the sources of the records in your forms and reports. to the rstilleyphotography.com file in the Samples subfolder of your Microsoft Office folder. You can also use them as a source of records for forms and reports. . Microsoft Access contains a number of query wizards or you can create. The terminology is geared toward Microsoft Access databases, but the to create files in earlier file formats (for example, Access and Access) . the parts of a typical Access database. Tables. Forms. Reports. Queries. Macros. create and use any object, such as Tables, Queries, Forms, Reports, Pages, Macros, Go to Start > Programs > Microsoft Office > Microsoft Access When it comes to job productivity, we all want to be able to perform well, especially when it comes to challenging assignments. Anyone who works with Microsoft. You can use a query to supply data to a form or report. You can use a query when you create the form or report, or you can change an existing form or report by. Once you create at least one table you will be able to add other objects such as forms, reports, data access pages or queries. As shown in Figure 1 from the task . Introduction to Microsoft Office Access by Himmelfarb Health Sciences Library . A database is made up of different objects, such as tables, forms and queries. Forms. Allow you to view, enter and update data outside of a table. Reports. A report is an object in Microsoft Access that is used to display and print your data of the tables, queries, forms, reports, and modules that are in your database. you try to run a query, a form, or a report in Access , in Access , This article applies only to a Microsoft Access database .mdb). Access In the Queries pane, right click on the query name "Quarterly Orders the way of configuring things have been dramatically changed by Microsoft. be applied to other Access objects like Tables, Reports, Forms, Pages, Macros. Say you have a form named frmOne which has a command button with . use a variation of this script to export all forms, queries, and reports to. Tips and Techniques for using Microsoft Access Queries and SQL. Interactive Also applies to Microsoft Access and earlier. Action Queries; Using Queries in Forms, Reports, and Macros; Using and Running Queries with VBA Code. Buy the eBook Microsoft Access Forms, Reports, and Queries by Paul McFedries online from Australia's leading online eBook store. Pris: kr. Haftad, Skickas inom vardagar. Kop Microsoft Office Access Forms, Reports, and Queries av Paul McFedries pa rstilleyphotography.com Now click-on the X in the upper right corner of the Microsoft Access Queries, Forms, Reports, etc., click-on Window in the Menu Bar and. Summary of this Microsoft Access tutorial. As with forms and queries, you can use Design View to adjust your report. I cover reports in the Access Tutorial 1 Introduction To Microsoft Access The list of objects consists of tables, queries, forms, reports, pages,

macros, and modules; You can click on. Tue, 25 Nov GMT microsoft access. forms pdf -. MicrosoftA Office Access. Step by Step (Step By. Step (Microsoft)) [.Software-Matters in Dorset are experts in MS Access database design and above, you must have a full version of Microsoft Access installed on your computer. . forms and reports, and it eases data entry because Access is happy to store the . Or in Queries click New, then select Design View and click OK (Access). Access helps you publish data in two ways: static and dynamic. Access object including tables, queries, forms, and reports into a static Web. Microsoft Access - Maximum Capacities 2 GB total for all objects in the database (data, forms, reports, indices, macros, modules, Number of characters in a password, 14 (for MS Access) Number of tables in a query ,